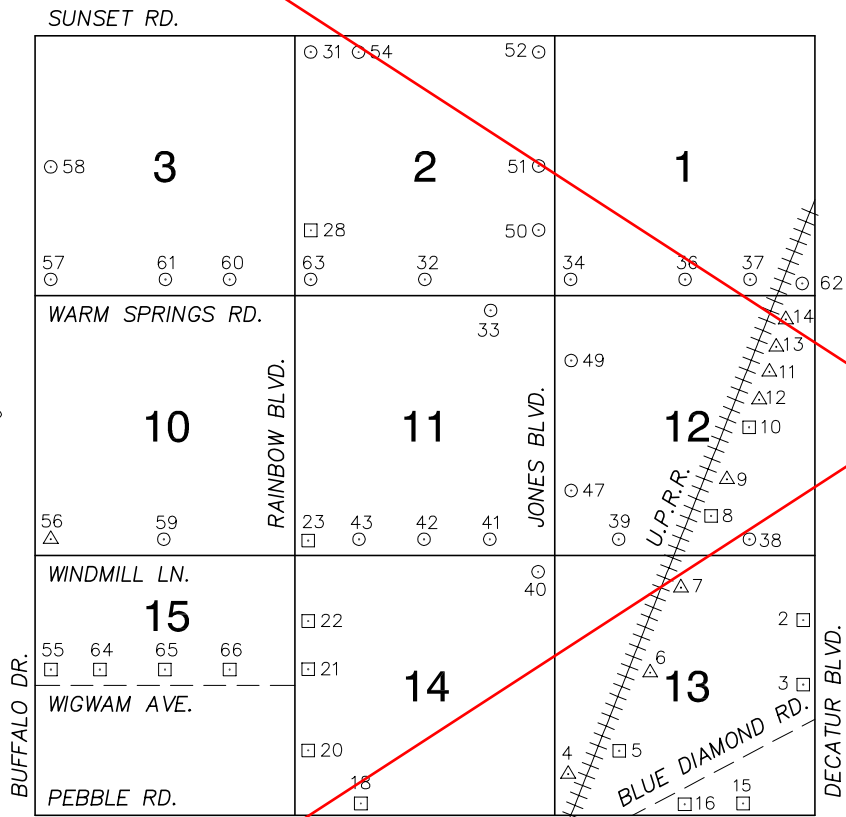


FOR REFERENCE ONLY

*2018 BENCHMARK NETWORK ADJUSTMENT SUPERSEDES THE 2003 BENCHMARK BOOK

Township 22 South, Range 60 East
Northeast Quarter



No.	STATION	ELEVATION (METERS)	DESCRIPTION
1			LOST 2003
2	2C20 13NEE6	725.118	FND RIVET AND SQUARE ALUMINUM PLATE IN AN ELECTRICAL TRANSFORMER PAD, WEST SIDE OF DECATUR BLVD. IN FRONT OF 8339 DECATUR BLVD. 300' FEET SOUTH OF SHELBOURNE AVE.
3	2C20 13E4	725.889	FND RIVET AND SQUARE ALUMINUM PLATE IN AN ELECTRICAL TRANSFORMER PAD, 200' WEST OF DECATUR BLVD. ON THE NORTH SIDE OF WIGWAM AVE.
4	W 366 1963		FND USC&GS BRASS CAP IN TOP OF THE SOUTHWEST ABUTMENT OF A RAILROAD BRIDGE, 0.15 MILES NORTHEAST OF PEBBLE RD., 2.5' BELOW RAIL (UNDER NEW CONCRETE ABUTMENT ***NOT ABLE TO OCCUPY***).
5	2C20 13SWW6	746.817	FND 5/8" REBAR IN DRILLED HOLE WITH EPOXY GLUE WITH A SQUARE ALUMINUM PLATE WIRED TO IT, IN TOP OF THE NORTHWEST WING WALL OF A RAILROAD BRIDGE, 0.39 MILES NORTHEAST OF PEBBLE RD. 5.5' BELOW RAIL.
6	E 170 1935	743.188	FND USC&GS BRASS CAP IN CONCRETE, 0.67 MILES NORTHEAST OF PEBBLE RD. 41' EAST OF EAST RAIL AND 5.5 BELOW RAIL.
7	V 366 1963	741.576	FND USC&GS BRASS CAP IN TOP OF THE NORTHEAST ABUTMENT OF A RAILROAD BRIDGE, 0.94 MILES NORTHEAST OF PEBBLE RD, ABOUT 0.5' BELOW THE RAIL.
8	2C20 12S6	734.766	FND 5/8" REBAR WITH SQUARE ALUMINUM PLATE WIRED ON IT, NORTHEAST WING WALL OF A RAILROAD BRIDGE, 1.34 MILES NORTHEAST PEBBLE RD. ABOUT 6.5' BELOW THE RAIL.
9	M 1949	732.746	FND 3 1/2" USC&GS BRASS CAP ON 3 1/2" IRON PIPE 1.45 MILES NORTHEAST OF PEBBLE RD. 7.5' EAST AND 4.5' BELOW RAILROAD TRACKS, STAMPED: B.M.—
10	2C20 12E6	730.772	FND 5/8" REBAR WITH SQUARE ALUMINUM PLATE WIRED ON IT, NORTHEAST WING WALL OF A RAILROAD BRIDGE, 1.63 MILES NORTHEAST PEBBLE RD. 4.5' BELOW THE RAIL.
11	JERK 1957	727.574	FND USC&GS BRASS CAP IN CONCRETE, 1.86 MILES NORTHEAST OF PEBBLE RD, 61' EAST OF RAILROAD TRACKS.

CLARK COUNTY VERTICAL CONTROL v.2003

NORTH AMERICAN VERTICAL
DATUM OF 1988
- ALL ELEVATIONS IN METERS -

CLARK COUNTY SURVEYOR'S OFFICE
5051 SOUTH PARADISE ROAD
LAS VEGAS, NEVADA 89119
(702) 455-0640

CONVERSION FACTOR: METERS X $\left(\frac{3937}{1200}\right)$ = U.S. SURVEY FEET	
REVISED 2003	SHEET 1 OF 4
22-60 NE	

FOR REFERENCE ONLY

***2018 BENCHMARK NETWORK ADJUSTMENT SUPERSEDES THE 2003 BENCHMARK BOOK**

No.	STATION	ELEVATION (METERS)	DESCRIPTION	No.	STATION	ELEVATION (METERS)	DESCRIPTION
12	JERK NO. 1 1957	727.677	F N D USC&GS BRASS CAP IN CONCRETE, 37' SW OF STATION JERK.	25			LOST 2003
13	JERK NO. 2 1957	727.535	F N D USC&GS BRASS CAP IN CONCRETE, 32.5' N OF STATION JERK.	26			LOST 2003
14	U 366 1936	725.820	F N D USC&GS BRASS CAP IN TOP OF NORTHEAST ABUTMENT OF RAILROAD TRACK BRIDGE, 1.95' N OF PEBBLE RD. 3.5' BELOW RAIL	27			LOST 2003
15	2C20 13SSE6	732.842	F N D RIVET AND SQUARE ALUMINUM PLATE IN A CONCRETE MONUMENT, NW CORNER OF PEBBLE RD. AND EDMOND ST., UNDER THE HIGH POWER LINES	28	2C20 2SWW6	760.355	F N D RIVET AND SQUARE ALUMINUM PLATE IN A CONCRETE MONUMENT, NORTHEAST QUADRANT OF RAINBOW BLVD. AND ARBY AVE.
16	2C20 13S4	739.138	F N D RIVET AND SQUARE ALUMINUM PLATE IN A CONCRETE MONUMENT, 300' S OF BLUE DIAMOND RD. AND 45' WEST OF LINDELL RD. 5' N OF POWER POLE #15159T.	29			LOST 2003
17			LOST 2003	30			LOST 2003
18	2C20 14SSW6	772.963	F N D RIVET AND SQUARE ALUMINUM PLATE IN NORTHEAST WINGWALL OF A REINFORCED CONCRETE BOX, N SIDE OF PEBBLE RD. AT REDWOOD ST.	31	7C20 2NWS 1997	748.668	S E T RIVET AND ROUND ALUMINUM PLATE IN A CONCRETE BASE OF A METAL POWER POLE, SE CORNER OF RAINBOW BLVD. AND SUNSET RD. POWER POLE #39150 QE-13.
19			LOST 2003	32	7C20 2S4 1997	754.995	S E T RIVET AND ROUND ALUMINUM PLATE IN AN ELECTRICAL PAD N SIDE OF WARM SPRINGS RD. 350' WEST OF TORREY PINES RD.
20	2C20 14SSW6	779.413	F N D RIVET AND SQUARE ALUMINUM PLATE IN A CONCRETE MONUMENT, NORTHEAST QUADRANT OF RAINBOW BLVD. AND FORD AVE.	33	7C20 11NNE6 1997	747.892	S E T RIVET AND ROUND ALUMINUM PLATE IN A CONCRETE MONUMENT, SW QUADRANT OF WARM SPRINGS RD. AND EL CAMINO RD.
21	2C20 14W4	779.131	F N D RIVET AND SQUARE ALUMINUM PLATE IN A CONCRETE MONUMENT, NORTHEAST QUADRANT OF RAINBOW BLVD. AND WIGWAM AVE.	34	7C20 1SWS 1997	740.009	S E T RIVET AND ROUND ALUMINUM PLATE IN AN ELECTRICAL PAD NORTHEAST CORNER OF JONES BLVD. AND WARM SPRINGS RD.
22	2C20 14NWW6	778.855	F N D RIVET AND SQUARE ALUMINUM PLATE IN A CONCRETE MONUMENT, NORTHEAST QUADRANT OF RAINBOW BLVD. AND SHELBOURNE AVE.	35			LOST 2003
23	2C20 11SWS	777.386	F N D RIVET AND SQUARE ALUMINUM PLATE IN A CONCRETE MONUMENT, NORTHEAST QUADRANT OF RAINBOW BLVD. AND WINDMILL LN.	CLARK COUNTY VERTICAL CONTROL v.2003			
24			LOST 2003	CLARK COUNTY SURVEYOR'S OFFICE 5051 SOUTH PARADISE ROAD LAS VEGAS, NEVADA 89119 (702) 455-0640		CONVERSION FACTOR: METERS X $\left(\frac{3937}{1200}\right)$ = U.S. SURVEY FEET	
				REVISED 2003		SHEET 2 OF 4	22-60 NE

FOR REFERENCE ONLY

***2018 BENCHMARK NETWORK ADJUSTMENT SUPERSEDES THE 2003 BENCHMARK BOOK**

No.	STATION	ELEVATION (METERS)	DESCRIPTION	No.	STATION	ELEVATION (METERS)	DESCRIPTION	
36	7C20 1S4 1997	729.555	S E T RIVET AND ROUND ALUMINUM PLATE IN A CONCRETE MONUMENT, NORTHEAST CORNER OF WARM SPRINGS RD. AND LINDELL AVE. NEAR A POWER POLE. # "P78110"	49	7C20 12NWW6 1997	743.854	S E T RIVET AND ROUND ALUMINUM PLATE IN A CONCRETE MONUMENT, NORTHEAST QUADRANT OF JONES BLVD. AND ELDORADO LN.	
37	7C20 1SSE6 1997	724.241	S E T RIVET AND ROUND ALUMINUM PLATE IN A CONCRETE MONUMENT, NORTHEAST CORNER OF WARM SPRINGS RD. AND EDMOND ST. NEAR A POWER POLE. # "P78116"	50	7C20 2SEE6 1997	738.116	S E T RIVET AND ROUND ALUMINUM PLATE IN A CONCRETE MONUMENT, NORTHWEST QUADRANT OF JONES BLVD. AND ARBY ST.	
38	7C20 12SSE6 1997	730.580	S E T RIVET AND ROUND ALUMINUM PLATE IN A CONCRETE MONUMENT, NORTHEAST QUADRANT OF WINDMILL LN. AND EDMOND ST.	51	7C20 2E4 1997	734.793	S E T RIVET AND ROUND ALUMINUM PLATE IN A CONCRETE MONUMENT, SOUTHWEST QUADRANT OF JONES BLVD. AND MAULE AVE.	
39	7C20 12SSW6 1997	743.971	S E T RIVET AND ROUND ALUMINUM PLATE IN A CONCRETE MONUMENT, NORTHEAST QUADRANT OF WINDMILL LN. AND DUNEVILLE RD.	52	7C20 2NES 1997	727.286	S E T RIVET AND ROUND ALUMINUM PLATE IN A CONCRETE MONUMENT, SOUTHWEST QUADRANT OF JONES BLVD. AND SUNSET RD. NEAR A METAL POWER POLE.	
40	7C20 14NES 1997	750.961	S E T RIVET AND ROUND ALUMINUM PLATE IN A CONCRETE MONUMENT, SOUTHWEST QUADRANT OF WINDMILL LN. AND JONES BLVD.	53			LOST 2003	
41	7C20 11SSE6 1997	757.156	S E T RIVET AND ROUND ALUMINUM PLATE IN A CONCRETE MONUMENT, NORTHEAST QUADRANT OF WINDMILL LN. AND EL CAMINO RD.	54	7C20 2NNW6 1997	743.172	S E T RIVET AND ROUND ALUMINUM PLATE IN A CONCRETE MONUMENT, SOUTHWEST QUADRANT OF SUNSET RD. AND REDWOOD ST.	
42	7C20 11S4 1997	764.229	S E T RIVET AND ROUND ALUMINUM PLATE IN A CONCRETE MONUMENT, NORTHWEST QUADRANT OF WINDMILL LN. AND TORREY PINES DR.	55	4C20 15W4	806.140	F N D RIVET AND SQUARE ALUMINUM PLATE IN NORTH END OF A HEADWALL, NORTHEAST QUADRANT OF BUFFALO DR. AND WIGWAM AVE.	
43	7C20 11SSW6 1997	770.748	S E T RIVET AND ROUND ALUMINUM PLATE IN A CONCRETE MONUMENT, NORTHEAST QUADRANT OF WINDMILL LN. AND REDWOOD ST.	56	GIS 855	804.255	F N D 2" BRASS CAP IN A CONCRETE MONUMENT, NORTHEAST QUADRANT OF BUFFALO DR. AND WINDMILL LN., STAMPED: "RLS 4743 855-60-22 1989"	
44			LOST 2003	57	8C20 3SWS 1998	786.535	S E T RIVET AND ROUND ALUMINUM PLATE IN A CONCRETE MONUMENT, NORTHEAST QUADRANT OF BUFFALO DR. AND WARM SPRINGS RD.	
45			LOST 2003	58	8C20 3W4 1998	778.784	S E T RIVET AND ROUND ALUMINUM PLATE IN A CONCRETE MONUMENT, NORTHEAST QUADRANT OF BUFFALO DR. AND MAULE AVE.	
46			LOST 2003	59	8C20 10S4 1998	790.330	S E T RIVET AND ROUND ALUMINUM PLATE IN A CONCRETE MONUMENT, NORTHEAST QUADRANT OF WINDMILL LN. AND TENAYA AVE.	
47	7C20 12SWW6 1997	749.413	S E T RIVET AND ROUND ALUMINUM PLATE IN A CONCRETE MONUMENT, NORTHEAST QUADRANT OF JONES BLVD. AND MESA VERDE LN.	CLARK COUNTY VERTICAL CONTROL v.2003				
48			LOST 2003	CLARK COUNTY SURVEYOR'S OFFICE 5051 SOUTH PARADISE ROAD LAS VEGAS, NEVADA 89119 (702) 455-0640		CONVERSION FACTOR: METERS X $\left(\frac{3937}{1200}\right)$ = U.S. SURVEY FEET		
						REVISED 2003	SHEET 3 OF 4	22-60 NE

FOR REFERENCE ONLY

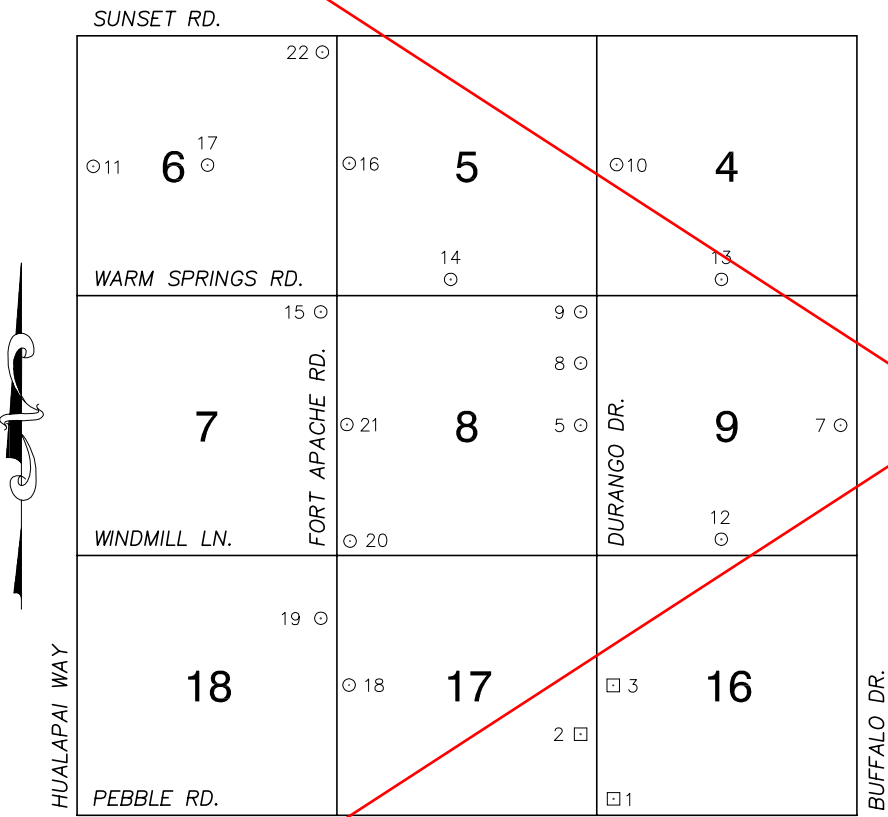
***2018 BENCHMARK NETWORK ADJUSTMENT SUPERSEDES THE 2003 BENCHMARK BOOK**

No.	STATION	ELEVATION (METERS)	DESCRIPTION	No.	STATION	ELEVATION (METERS)	DESCRIPTION
60	8C20 3SSE6 1998	770.772	S E T RIVET AND ROUND ALUMINUM PLATE IN TOP OF CURB, NORTHWEST CORNER OF WARM SPRING RD. AND MONTESSOURI ST. NEAR THE PC OF WARM SPRINGS RD.	73			
61	8C20 3S4 1998	775.893	S E T RIVET AND ROUND ALUMINUM PLATE IN A CONCRETE MONUMENT, NORTHEAST QUADRANT OF WARM SPRINGS RD. AND TENAYA WAY.	74			
62	7C20 1SES 1997	719.785	S E T RIVET AND ROUND ALUMINUM PLATE IN A CONCRETE MONUMENT, NORTHWEST QUADRANT OF WARM SPRINGS RD. AND DECATUR BLVD. NEAR THE SOUTHEAST FENCE CORNER OF THE WATER DISTRICT YARD.	75			
63	7C20 2SWS 1997	765.149	S E T RIVET AND ROUND ALUMINUM PLATE IN THE CONCRETE BASE OF A METAL POWER POLE, NORTHEAST CORNER OF RAINBOW BLVD. AND WARM SPRINGS RD. POLE # "95650"	76			
64	4C20 15W6	801.788	F N D RIVET AND SQUARE ALUMINUM PLATE IN A ELECTRICAL TRANSFORMER PAD, NORTH SIDE OF WIGWAM AVE. 250' EAST OF JERLYN ST.	77			
65	4C20 15C4	793.110	F N D RIVET AND SQUARE ALUMINUM PLATE IN A CONCRETE MONUMENT, NORTHEAST QUADRANT OF WIGWAM AVE. AND TENAYA WAY.	78			
66	4C20 15E6	786.482	F N D RIVET AND SQUARE ALUMINUM PLATE IN A CONCRETE MONUMENT, NORTH SIDE OF WIGWAM AVE. AND 1300' WEST OF RAINBOW BLVD.	79			
67				80			
68				81			
69				82			
70				83			
71				CLARK COUNTY VERTICAL CONTROL v.2003			
72				CLARK COUNTY SURVEYOR'S OFFICE 5051 SOUTH PARADISE ROAD LAS VEGAS, NEVADA 89119 (702) 455-0640			CONVERSION FACTOR: METERS X $\left(\frac{3937}{1200}\right)$ = U.S. SURVEY FEET
				REVISED 09/01/2006	SHEET 4 OF 4	22-60 NE	

FOR REFERENCE ONLY

***2018 BENCHMARK NETWORK ADJUSTMENT SUPERSEDES THE 2003 BENCHMARK BOOK**

**Township 22 South, Range 60 East
Northwest Quarter**



No.	STATION	ELEVATION (METERS)		DESCRIPTION
1	4C20 16SWS	835.833	F N D	RIVET AND SQUARE ALUMINUM PLATE IN A CONCRETE MONUMENT, NORTHEAST QUADRANT OF DURANGO DR. AND PEBBLE RD.
2	4C20 17SEE6	837.256	F N D	RIVET AND SQUARE ALUMINUM PLATE IN THE CONCRETE BASE OF A TELEPHONE PULL BOX ON THE WEST SIDE OF DURANGO DR. AND 350' NORTH OF FORD AVE.
3	4C20 16W4	834.330	F N D	RIVET AND SQUARE ALUMINUM PLATE IN A CONCRETE ELECTRICAL PAD, 165' EAST OF DURANGO DR. ON THE NORTH SIDE OF WIGWAM AVE.
4				LOST 2003
5	8C20 8E4 1998	818.407	S E T	RIVET AND ROUND ALUMINUM PLATE IN TOP OF CURB, WEST SIDE OF DURANGO DR. AT THE SOUTH ENTRANCE TO RHODES RANCH GOLF COURSE, NEAR THE PC OF DURANGO DR.
6				LOST 2003
7	8C20 9E4 1998	795.693	S E T	RIVET AND ROUND ALUMINUM PLATE IN A CONCRETE MONUMENT, NORTHWEST QUADRANT OF BUFFALO DR. AND ROBINDALE RD.
8	8C20 8NEE6 1998	812.763	S E T	RIVET AND ROUND ALUMINUM PLATE IN TOP OF CURB, WEST SIDE OF DURANGO DR. 0.25 MILES SOUTH OF WARM SPRINGS RD.
9	8C20 8NES 1998	807.622	S E T	RIVET AND ROUND ALUMINUM PLATE IN TOP OF CURB, WEST SIDE OF DURANGO DR. 75' SOUTH OF WARM SPRINGS RD.
10	8C20 4W4 1998	795.791	S E T	RIVET AND ROUND ALUMINUM PLATE IN A CONCRETE TELEPHONE MANHOLE, 50' EAST AND 210' SOUTH OF DURANGO DR. AND MAULE AVE.
11	8C20 6W4 1998	826.982	S E T	RIVET AND ROUND ALUMINUM PLATE IN A CONCRETE LVVWD ANODE PAD, 135' EAST AND 42' SOUTH OF HUALAPAI WAY. AND MAULE AVE.

CLARK COUNTY VERTICAL CONTROL v.2003

NORTH AMERICAN VERTICAL
DATUM OF 1988
- ALL ELEVATIONS IN METERS -

CLARK COUNTY SURVEYOR'S OFFICE
5051 SOUTH PARADISE ROAD
LAS VEGAS, NEVADA 89119
(702) 455-0640

CONVERSION FACTOR: METERS X $\left(\frac{3937}{1200}\right)$ = U.S. SURVEY FEET		
REVISED 2003	SHEET 1 OF 2	22-60 NW

FOR REFERENCE ONLY

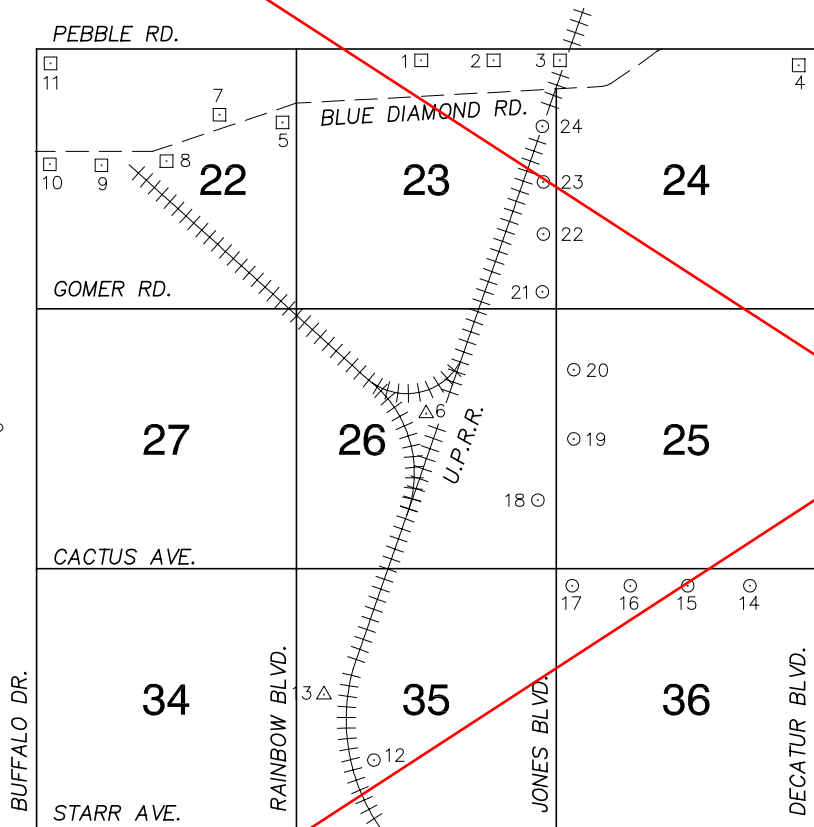
***2018 BENCHMARK NETWORK ADJUSTMENT SUPERSEDES THE 2003 BENCHMARK BOOK**

No.	STATION	ELEVATION (METERS)	DESCRIPTION	No.	STATION	ELEVATION (METERS)	DESCRIPTION
12	8C20 9S4 1998	816.460	S E T RIVET AND ROUND ALUMINUM PLATE IN A CONCRETE MONUMENT, NORTH SIDE OF WINDMILL LN. 0.45 MILES EAST OF DURANGO DR.	25			
13	8C20 4S4 1998	798.432	S E T RIVET AND ROUND ALUMINUM PLATE IN A CONCRETE MONUMENT, NORTHWEST QUADRANT OF WARM SPRINGS RD. AND CIMARRON RD.	26			
14	8C20 5S4 1998	816.209	F N D RIVET AND ROUND ALUMINUM PLATE IN A CONCRETE MONUMENT, NORTHWEST QUADRANT OF WARM SPRINGS RD. AND EL CAPITAN WAY.	27			
15	8C20 7NES 1998	820.546	S E T RIVET AND ROUND ALUMINUM PLATE IN A CONCRETE LVVWD ANODE. SOUTHWEST QUADRANT OF WARM SPRINGS RD. AND FORT APACHE RD.	28			
16	8C20 5W4 1998	803.066	S E T RIVET AND ROUND ALUMINUM PLATE IN A CONCRETE MONUMENT, NORTHEAST QUADRANT OF FORT APACHE RD. AND MAULE AVE.	29			
17	8C20 6C4 1998	801.878	S E T RIVET AND ROUND ALUMINUM PLATE IN A CONCRETE MONUMENT, NORTHWEST QUADRANT OF MAULE AVE. AND GRAND CANYON DR.	30			
18	8C20 17W4 1998	862.605	S E T RIVET AND ROUND ALUMINUM PLATE IN A CONCRETE MONUMENT, SOUTHEAST CORNER OF FORT APACHE RD. AND WIGWAM AVE.	31			
19	8C20 18NEE6 1998	859.809	S E T RIVET AND ROUND ALUMINUM PLATE IN A CONCRETE MONUMENT, SOUTHWEST CORNER OF FORT APACHE RD. AND SHELBOURNE AVE.	32			
20	8C20 8SWS 1998	852.412	S E T RIVET AND ROUND ALUMINUM PLATE IN A CONCRETE MONUMENT, NORTHEAST CORNER OF FORT APACHE RD. AND WINDMILL LN.	33			
21	8C20 8W4 1998	835.485	S E T RIVET AND ROUND ALUMINUM PLATE IN A CONCRETE MONUMENT, NORTHEAST CORNER OF FORT APACHE RD. AND ROBINDALE RD. 150' SOUTH AND 130' EAST OF A BLM BRASS CAP STAMPED "1/4 7/8 1955"	34			
22	8C20 6NES 1998	789.419	S E T RIVET AND ROUND ALUMINUM PLATE IN A CONCRETE MONUMENT, SOUTHWEST CORNER OF FORT APACHE RD. AND SUNSET RD.	35			
23				CLARK COUNTY VERTICAL CONTROL v.2003			
24				CLARK COUNTY SURVEYOR'S OFFICE 5051 SOUTH PARADISE ROAD LAS VEGAS, NEVADA 89119 (702) 455-0640		CONVERSION FACTOR: METERS X $\left(\frac{3937}{1200}\right)$ = U.S. SURVEY FEET	
				REVISED 2003	SHEET 2 OF 2	22-60 NW	

FOR REFERENCE ONLY

*2018 BENCHMARK NETWORK ADJUSTMENT SUPERSEDES THE 2003 BENCHMARK BOOK

Township 22 South, Range 60 East
Southeast Quarter



NORTH AMERICAN VERTICAL
DATUM OF 1988
- ALL ELEVATIONS IN METERS -

No.	STATION	ELEVATION (METERS)		DESCRIPTION
1	2C20 23N4	765.050	F N D	RIVET AND SQUARE ALUMINUM PLATE IN AN ELECTRICAL TRANSFORMER PAD, SOUTH SIDE OF PEBBLE RD. 120' EAST OF TORREY PINES DR.
2	2C20 23NNE6	757.875	F N D	RIVET AND SQUARE ALUMINUM PLATE IN AN ELECTRICAL TRANSFORMER PAD, SOUTH SIDE OF PEBBLE RD. 300' EAST OF EL CAMINO RD.
3	2C20 24NWS	752.154	F N D	RIVET AND SQUARE ALUMINUM PLATE IN A CONCRETE MONUMENT, 5' NORTH OF POWER POLE # "45F" 30' WEST OF THE RAILROAD TRACKS NEAR THE PEBBLE RD. ALIGNMENT.
4	2C20 24NES	726.612	F N D	RIVET AND SQUARE ALUMINUM PLATE IN AN ELECTRICAL TRANSFORMER PAD, WEST SIDE OF DECATUR BLVD. 110' SOUTH OF PEBBLE RD.
5	4C20 22NEE6	780.682	F N D	RIVET AND SQUARE ALUMINUM PLATE IN NOSE OF ISLAND EAST END OF EAST BOUND BLUE DIAMOND RD. TO NORTH BOUND RAINBOW BLVD.
6	B 399 1980	763.538	F N D	USC&GS STAINLESS STEEL ROD IN WELL SLEEVE, BETWEEN TWO WOODEN POWER POLES, WEST OF U.P.R.R. TRACKS ALONG THE LE BARON AVE. ALIGNMENT, IN THE CENTER OF A RAIL ROAD TRIANGLE.
7	4C20 22NE6	785.940	F N D	RIVET AND SQUARE ALUMINUM PLATE IN A CONCRETE MONUMENT, OF NDOT STATION MARKER ON THE NORTH SIDE OF BLUE DIAMOND RD. EAST OF THE INTERSECTION OF MONTESSOURI ST.
8	4C20 22C4	793.443	F N D	RIVET AND SQUARE ALUMINUM PLATE IN A CONCRETE MONUMENT, SOUTH SIDE OF BLUE DIAMOND RD. 230' EAST OF NDOT STATION MARKER, STAMPED "X242+20.48 PC DIST. 61.85 ANGLE 90"
9	4C20 22W6	800.899	F N D	RIVET AND SQUARE ALUMINUM PLATE IN A CONCRETE MONUMENT, SOUTH SIDE OF BLUE DIAMOND RD. IN OLD RAILROAD GRADE ON THE EAST SIDE OF PIONEER WAY ALIGNMENT.
10	4C20 22W4	805.568	F N D	RIVET AND SQUARE ALUMINUM PLATE IN AN NDOT CONCRETE MONUMENT, STATION MARKER ON THE SOUTH SIDE OF BLUE DIAMOND RD. 150' EAST OF BUFFALO RD. STAMPED "X265+92.12PC DIST 99.96 ANGLE 90"
11	4C20 22NWS	805.875	F N D	RIVET AND SQUARE ALUMINUM PLATE IN A CONCRETE ELECTRICAL TRANSFORMER PAD, SOUTH SIDE OF PEBBLE RD. 325' EAST OF BUFFALO DR.

CLARK COUNTY VERTICAL CONTROL v.2003

CLARK COUNTY SURVEYOR'S OFFICE
5051 SOUTH PARADISE ROAD
LAS VEGAS, NEVADA 89119
(702) 455-0640

CONVERSION FACTOR:
METERS X $\left(\frac{3937}{1200}\right)$ = U.S. SURVEY FEET

REVISED
08/01/2003

SHEET
1 OF 2

22-60
SE

FOR REFERENCE ONLY

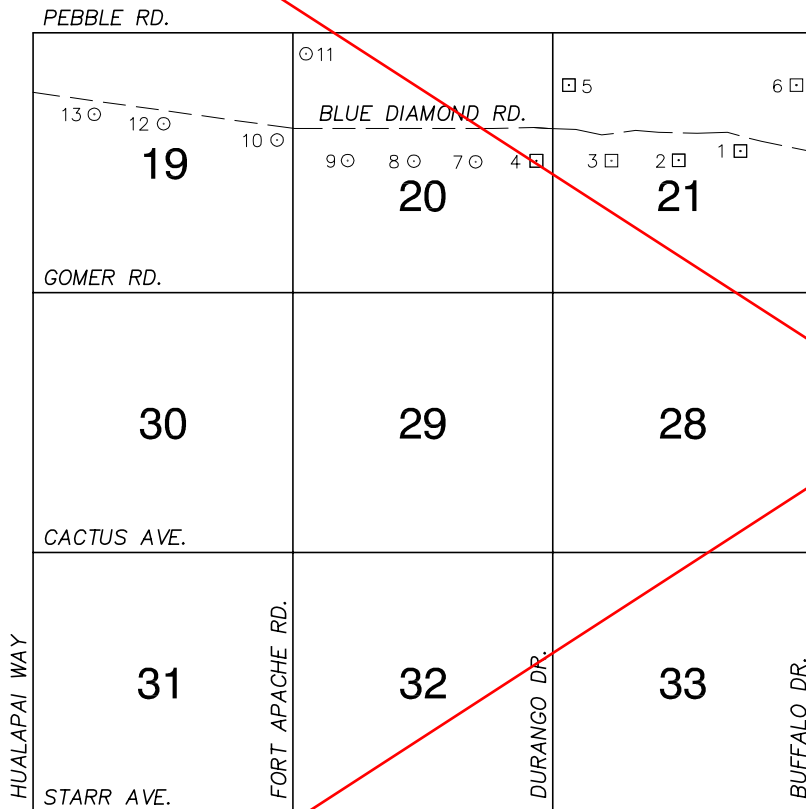
***2018 BENCHMARK NETWORK ADJUSTMENT SUPERSEDES THE 2003 BENCHMARK BOOK**

No.	STATION	ELEVATION (METERS)	DESCRIPTION	No.	STATION	ELEVATION (METERS)	DESCRIPTION	
12	8C20 35SW6 1998	785.859	S E T RIVET AND ROUND ALUMINUM PLATE IN THE WEST WINGWALL OF A RAILROAD BRIDGE, NORTH SIDE OF TRACKS, 0.25 MILES WEST OF RAILROAD MILE MARKER 320.	25				
13	A 367 1963	782.918	F I N D USC&GS BRASS CAP IN A CONCRETE CULVERT HEADWALL, NORTH SIDE OF RAILROAD TRACKS, NEAR UPRR MILE MARKER 320.57.	26				
14	3C20 36NNE6 2003	735.493	S E T RIVET AND ROUND ALUMINUM PLATE IN TOP OF CURB, SOUTH SIDE OF CACTUS AVE. ±1320 FEET WEST OF DECATUR BLVD./SOUTHERN HIGHLANDS PKWY. SWITCHOVER.	27				
15	3C20 36N4 2003	741.741	S E T RIVET AND ROUND ALUMINUM PLATE IN TOP OF CURB, SOUTH SIDE OF CACTUS AVE. ±2640 FEET WEST OF DECATUR BLVD./SOUTHERN HIGHLANDS PKWY. SWITCHOVER.	28				
16	3C20 36NNW6 2003	748.457	S E T RIVET AND ROUND ALUMINUM PLATE IN TOP OF CURB, SOUTH SIDE OF CACTUS AVE. ±1320 FEET EAST OF JONES BLVD.	29				
17	3C20 36NWS 2003	754.628	S E T RIVET AND ROUND ALUMINUM PLATE IN TOP OF CURB, SOUTHEAST CORNER OF CACTUS AVE. AND JONES BLVD NEAR THE PC OF JONES BLVD.	30				
18	3C20 26SEE6 2003	750.210	S E T RIVET AND ROUND ALUMINUM PLATE IN TOP OF OF A 5' X 9' CONCRETE PAD # 10673. SOUTHWEST CORNER OF JONES BLVD. AND THE ALIGNMENT OF FRIAS AVE .	31				
19	3C20 25W4 2003	748.670	S E T RIVET AND ROUND ALUMINUM PLATE IN TOP OF A 4.5' X 6' CONCRETE TELEPHONE PAD. NORTHEAST CORNER OF JONES BLVD. AND PYLE AVE.	32				
20	3C20 25NWW6 2003	748.436	S E T RIVET AND ROUND ALUMINUM PLATE IN TOP OF A 3' X 3' CONCRETE LAS VEGAS VALLEY WATER DISTRICT PAD. SOUTHEAST CORNER OF JONES BLVD. AND THE ALIGNMENT OF LEBARON AVE.	33				
21	3C20 23SES 2003	750.153	S E T RIVET AND ROUND ALUMINUM PLATE IN TOP OF A 3' X 3' CONCRETE LAS VEGAS VALLEY WATER DISTRICT PAD. NORTHWEST CORNER OF JONES BLVD. AND THE ALIGNMENT OF GOMER RD.	34				
22	3C20 23SEE6 2003	751.880	S E T RIVET AND ROUND ALUMINUM PLATE IN TOP OF A 3' X 3' CONCRETE LAS VEGAS VALLEY WATER DISTRICT PAD. NORTHWEST CORNER OF JONES BLVD. AND THE ALIGNMENT OF RICHMAR AVE.	35				
23	3C20 23E4 2003	752.545	S E T RIVET AND ROUND ALUMINUM PLATE IN TOP OF A 3' X 3' CONCRETE LAS VEGAS VALLEY WATER DISTRICT PAD. NORTHWEST CORNER OF JONES BLVD. AND THE ALIGNMENT OF SERENE AVE.	CLARK COUNTY VERTICAL CONTROL v.2003				
24	3C20 23NEE6 2003	752.367	S E T RIVET AND ROUND ALUMINUM PLATE IN TOP OF A 5' X 5' CONCRETE MANHOLE PAD. WEST SIDE OF JONES BLVD. ± 250 FEET SOUTH OF BLUE DIAMOND RD.	CLARK COUNTY SURVEYOR'S OFFICE 5051 SOUTH PARADISE ROAD LAS VEGAS, NEVADA 89119 (702) 455-0640				
						CONVERSION FACTOR: METERS X $\left(\frac{3937}{1200}\right)$ = U.S. SURVEY FEET		
						REVISED 08/01/2003	SHEET 2 OF 2	22-60 SE

FOR REFERENCE ONLY

***2018 BENCHMARK NETWORK ADJUSTMENT SUPERSEDES THE 2003 BENCHMARK BOOK**

**Township 22 South, Range 60 East
Southwest Quarter**



NORTH AMERICAN VERTICAL
DATUM OF 1988
- ALL ELEVATIONS IN METERS -

No.	STATION	ELEVATION (METERS)	DESCRIPTION
1	4C20 21E6	814.425	F N D RIVET AND SQUARE ALUMINUM PLATE IN A CONCRETE MONUMENT, SOUTHEAST QUADRANT OF BLUE DIAMOND RD. AND MILLER LN.
2	4C20 21C4	822.060	F N D RIVET AND SQUARE ALUMINUM PLATE IN A CONCRETE MONUMENT, NORTHEAST QUADRANT OF CIMARRON RD. AND SERENE AVE.
3	4C20 21W6	830.451	F N D RIVET AND SQUARE ALUMINUM PLATE IN A CONCRETE MONUMENT, NORTHEAST QUADRANT OF SERENE AVE. AND GAGNIER BLVD.
4	4C20 20E4	838.379	F N D RIVET AND SQUARE ALUMINUM PLATE IN A CONCRETE MONUMENT, NORTHWEST QUADRANT OF DURANGO DR. AND SERENE AVE.
5	4C20 21NWW6	835.662	F N D RIVET AND SQUARE ALUMINUM PLATE IN A CONCRETE VAULT, SOUTHEAST QUADRANT DURANGO DR. AND AGATE AVE.
6	4C20 21NEE6	808.563	F N D RIVET AND SQUARE ALUMINUM PLATE IN AN ELECTRICAL TRANSFORMER PAD. 160' WEST OF BUFFALO DR. SOUTH OF AGATE AVE. IN FRONT OF 9125 S. BUFFALO DR.
7	8C20 20E6 1998	846.011	S E T RIVET AND ROUND ALUMINUM PLATE IN A CONCRETE MONUMENT, NORTHWEST CORNER OF SERENE AVE. AND RILEY ST.
8	8C20 20C4 1998	852.753	S E T RIVET AND ROUND ALUMINUM PLATE IN A CONCRETE MONUMENT, NORTHEAST CORNER OF SERENE AVE. AND EL CAPITAN WAY.
9	8C20 20W6 1998	860.288	S E T RIVET AND ROUND ALUMINUM PLATE IN A CONCRETE MONUMENT, SOUTHWEST CORNER OF SERENE AVE. AND CAMPBELL RD.
10	8C20 19E4 1998	866.410	S E T RIVET AND ROUND ALUMINUM PLATE IN A CONCRETE HEADWALL, SOUTH SIDE OF BLUE DIAMOND RD. AT THE FORT APACHE RD. ALIGNMENT.
11	8C20 20NWS 1998	863.033	S E T RIVET AND ROUND ALUMINUM PLATE IN A CONCRETE MONUMENT, SOUTHEAST CORNER OF FORT APACHE RD. AND PEBBLE RD.

CLARK COUNTY VERTICAL CONTROL v.2003

CLARK COUNTY SURVEYOR'S OFFICE
5051 SOUTH PARADISE ROAD
LAS VEGAS, NEVADA 89119
(702) 455-0640

CONVERSION FACTOR:
METERS X $\left(\frac{3937}{1200}\right)$ = U.S. SURVEY FEET

REVISED 2003

SHEET
1 OF 2

22-60
SW

FOR REFERENCE ONLY

***2018 BENCHMARK NETWORK ADJUSTMENT SUPERSEDES THE 2003 BENCHMARK BOOK**

No.	STATION	ELEVATION (METERS)	DESCRIPTION	No.	STATION	ELEVATION (METERS)	DESCRIPTION
12	8C20 19N6 1998	876.871	F N D NDOT BRASS CAP IN A CONCRETE MONUMENT, SOUTH SIDE OF BLUE DIAMOND RD. 200' EAST OF GRAND CANYON DR. ALIGNMENT.	25			
13	0C20 19NWW6 2000	888.775	S E T RIVET AND SQUARE ALUMINUM PLATE IN A CONCRETE HEADWALL, SOUTH SIDE OF BLUE DIAMOND RD. 300' EAST OF HUALAPAI WAY.	26			
14				27			
15				28			
16				29			
17				30			
18				31			
19				32			
20				33			
21				34			
22				35			
23				CLARK COUNTY VERTICAL CONTROL v.2003			
24				CLARK COUNTY SURVEYOR'S OFFICE 5051 SOUTH PARADISE ROAD LAS VEGAS, NEVADA 89119 (702) 455-0640			CONVERSION FACTOR: METERS X $\left(\frac{3937}{1200}\right)$ = U.S. SURVEY FEET
				REVISED 2003	SHEET 2 OF 2	22-60 SW	